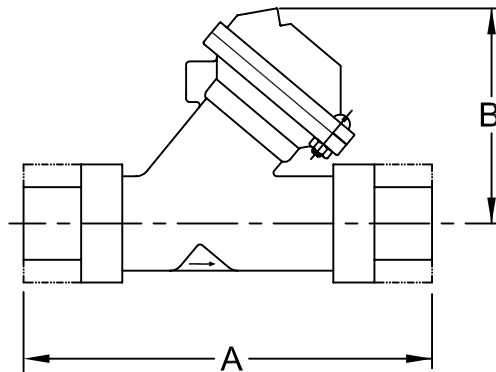


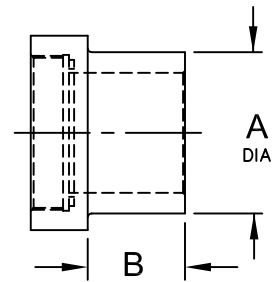
FEMALE SOCKET WELD END CONNECTOR KITS

VALVE SERIES	STANDARD	PART NO. *	DIAMETER A	DEPTH B
524	A.S.T.M. 2"	K524-UF08U_P	2.376/2.384"	1.50"
	I.S.O. NW-50	K524-UF50M_P	2.484/2.492"	1.50"
	J.I.S. 50	K524-UF50J_P	2.359/2.383"	1.50"
526	A.S.T.M. 2-1/2"	K526-UF10U_P	2.875"	1.81"
	I.S.O. NW-65	K526-UF65M_P	2.956/2.964"	1.81"
	J.I.S. 65	K526-UF65J_P	3.008"	1.81"

NOTE: ALL CONNECTOR KITS CONTAIN (2) CONNECTORS AND (2) O-RINGS* (ONE KIT REQ'D. PER VALVE)



VALVE SERIES	PIPE SIZE	UNITS	LENGTH A	HEIGHT B
524	2"	INCHES	10.50	5.06
		MM	266.7	128.5
526	2-1/2"	INCHES	15.00	7.31
		MM	381.0	185.7



MALE SOCKET WELD END CONNECTOR KITS

VALVE SERIES	STANDARD	PART NO. *	DIAMETER A	LENGTH B
524	A.S.T.M. 2"	K524-UM08U_P	2.375/2.370"	1.50"
	I.S.O. NW-50	K524-UM50M_P	2.490/2.486"	1.50"
	J.I.S. 50	K524-UM50J_P	2.384/2.364"	1.00"
526	A.S.T.M. 2-1/2"	K526-UM10U_P	2.882/2.868"	1.69"
	I.S.O. NW-65	K526-UM65M_P	2.965/2.953"	1.69"
	J.I.S. 65	K526-UM65J_P	3.017/2.997"	1.38"

O-RING FOR SOCKET WELD END CONNECTORS

VALVE SERIES	MATERIAL	PART NO.	O-RING IDENTIFIER
524	E.P.D.M.	1071750 ORE-226	E
	BUTYL	1079844 ORJ-226	J
	FKM	1071821 ORV-226	V
526	E.P.D.M.	1071753 ORE-232	E
	BUTYL	1071783 ORJ-232	J
	FKM	1071825 ORV-232	V

*WHEN ORDERING KITS, INSERT O-RING IDENTIFIER INTO PART NUMBER AS SHOWN BELOW
 EXAMPLE: K524-UF08UEP (2" FEMALE SOCKET WELD WITH E.P.D.M. O-RING)

O-RING IDENTIFIER

FORM NO. 1081311

A	RELEASE NEW DESIGN	1416	JWB	25JUL01	VP
REV	DESCRIPTION	ECO	DWN	DATE	APVD



20580 Enterprise Avenue
 Brookfield, WI 53045
 888.784.9065
 www.Pentairwatertreatment.com

**SERIES 524, & 526 DIAPHRAGM VALVE
 END CONNECTOR PARTS & KITS**

SCALE	DRAWN	DATE	DWG. NO.
N/A	JWB	25JUL01	1078150

SEE FORM 1078142 FOR
 SOCKET WELD & PIPE ADAPTORS

