



# PERFORMANCE BULLETIN

 Product Application Service General

news from



June 30, 2004

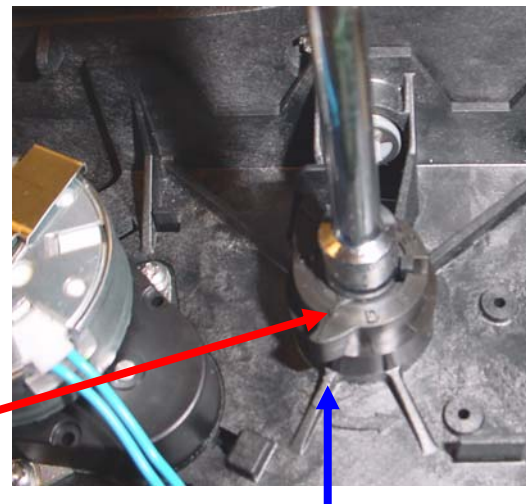
## Removing and Installing the 7000 Powerhead

### Powerhead Removal

#### Step 1

Manually cycle the Brine Cam using a 3/8" nut driver so the Brine Cam arrow aligns with the Rib arrow.

Brine Cam Arrow



Rib Arrow

Fig 1.1

#### Step 2

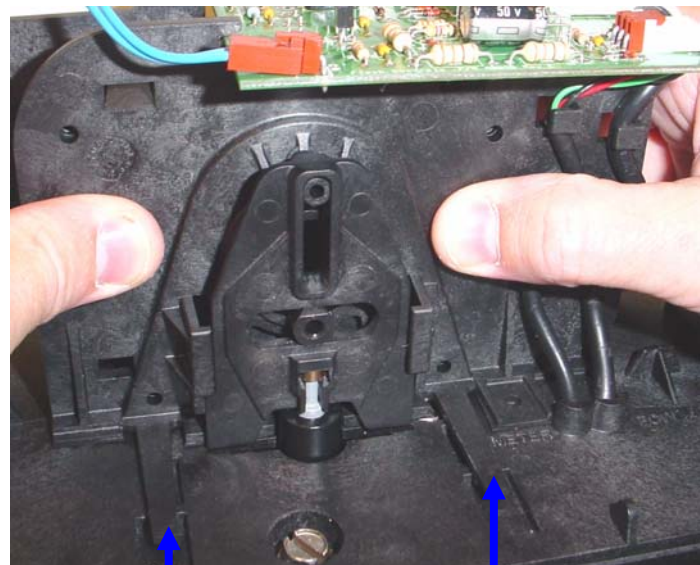
Pull tab A slightly toward you and press gear box upward until the tab is released.

#### Step 3

Pull tab B slightly toward you and press gear box upward until the tab is released.

#### Step 4

Once tabs are released push entire powerhead upwards, then pull forward.



Tab A

Tab B

Fig 1.2

## Powerhead Installation

### Step 1

- A. Turn the piston link in the Vertical position and push it so it bottoms out against the backplate. *See figure 1.3 below*
- B. Turn piston link to the Horizontal position making sure link is clear of guides & the guide pin is in the slot. *See figure 1.4 below*

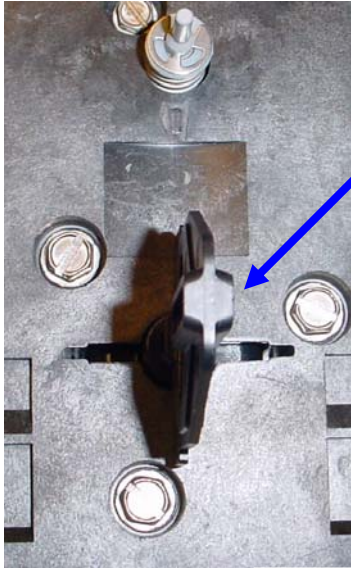


Fig 1.3

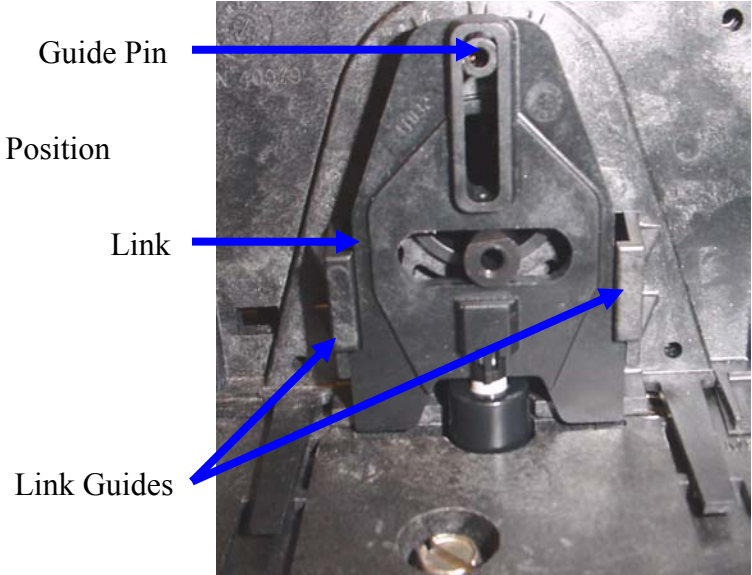
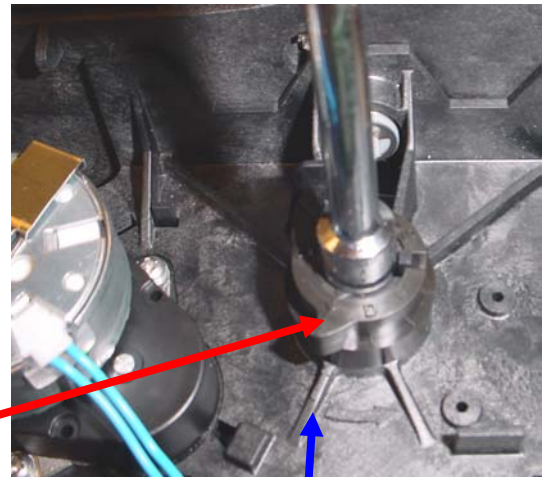


Fig 1.4

### Step 2

Manually cycle the Brine Cam using a 3/8" nut driver so the Brine Cam arrow aligns with the Rib arrow.

Brine Cam Arrow



Rib Arrow

Fig 1.5

### Step 3

Align gear box with holes in the backplate and push gear box downward.

### Step 4

A. Confirm sure snaps are completely fastened.

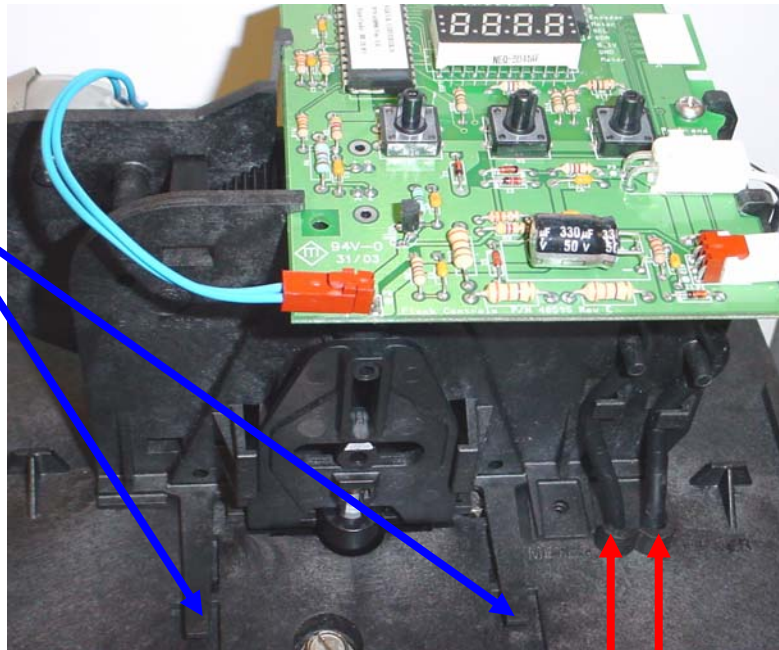


Fig 1.6

B. Confirm the Meter Cable and the Transformer Cable are in the correct openings through the powerhead.

Transformer Cable

Meter Cable

As always, thank you for using Fleck controls.

Sincerely,

Pentair Water Treatment, Inc.

Ken Mills

Technical Sales/Support