



PERFORMANCE BULLETIN

 Product Application Service General

news from

**Pentair**
Water Treatment

March 19, 2003

9100 Updates Compared To The 9000

Screw

The 14202 screw that holds the connecting yoke assembly for the 9000 2nd tank adapter has been shortened and changed to 14202-01. If you do not use the new 14202-01 screw in a 9100, the screw will not tighten the 13255 clip. Performance Bulletin # 387 will also explain the change.

Old

14202
8-32 x 3/8"

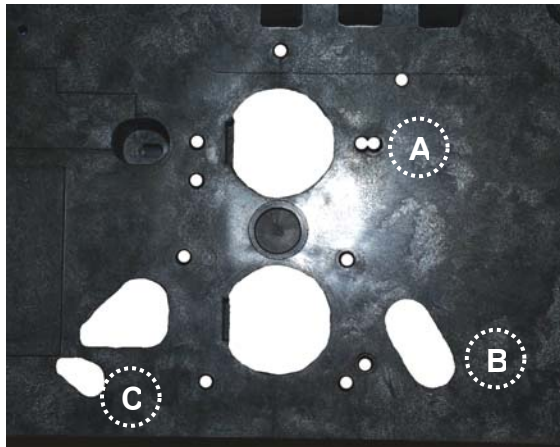
New

14202-01
8-32 x 5/16"

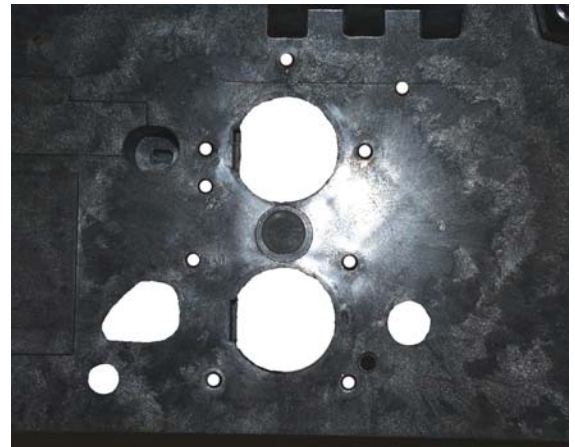
Backplate

The 9000 backplate has been changed to accommodate the screw location for connecting to the valve body, 2nd tank and meter connection for the 9100. If you have an older backplate (powerhead) in stock for a 9000, this will not work on a 9100. The backplate change was in production in late October of 2002.

New 9000/9100 Backplate



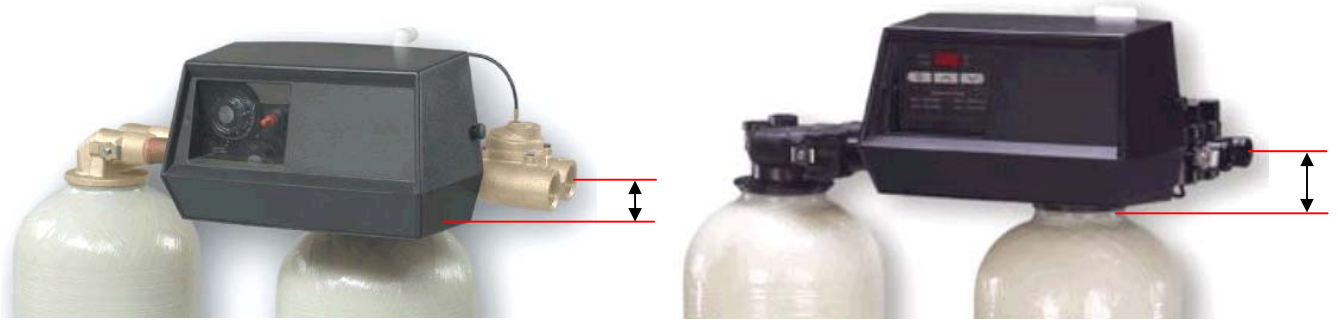
Old 9000 Backplate



- A. Extra screw hole for connecting to 9100-valve body.
- B. Larger opening for locating screw for 2nd tank connection.
- C. Larger opening for meter screw.

Inlet/Outlet

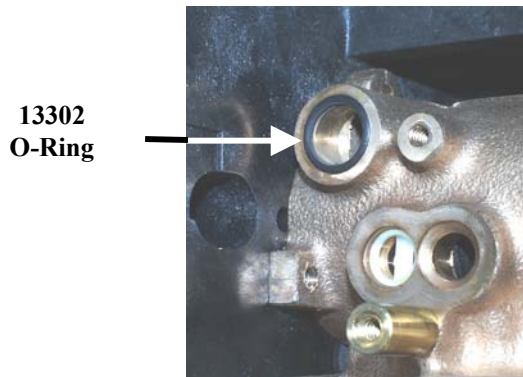
The 9100 control valve inlet/outlet will be about 3/4" higher above the tank than a 9000 control valve. If you were to convert an existing 9000 to a 9100, plumbing changes may be required.



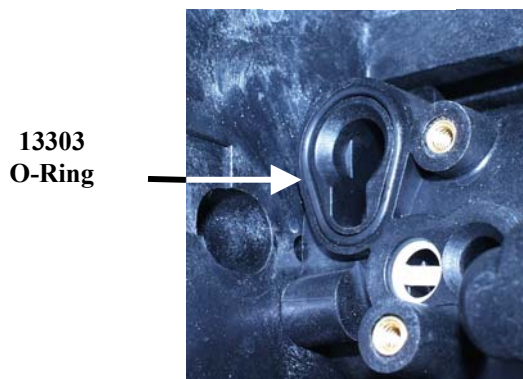
Injector Drain O-ring

The 9100 injector drain o-ring is larger than the o-ring on the 9000 control valve. When ordering the 60385-XXXX injector assembly, both drain o-rings will be included with the assembly.

9000 Drain



9100 Drain



60385-XXXX
With Both Drain O-Rings



As always, thank you for using Fleck controls.

Sincerely,
Pentair Water Treatment, Inc.

Jay Runkle
Technical/Sales Support