



PERFORMANCE BULLETIN

Product Application Service General news from



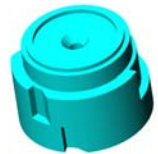
September 27, 2002

The New Double Backwash Cam For 5600SE, 6600 and 6700 Control Valves

The double backwash cam is available as a new option for downflow (co-current) 5600SE, 6600, and 6700 control valves. The 5th cycle step option in programming will be turned on for brine refill and the 6th cycle will remain off. The double backwash cam (part number 40609) will be **blue** in color for identification.

The cycle steps are as follow:

- Backwash
- Brine Draw/Slow Rinse
- 2nd Backwash
- Rapid Rinse
- Brine Refill

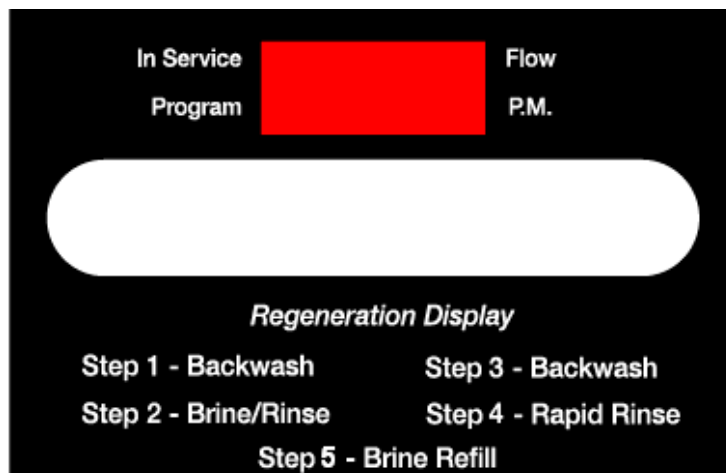


The 5600SE and 6700 control valves will have a new front panel label designed for the double backwash cam. The 6600 control valve will not require label changes.

5600SE

The part number to replace the front panel assembly for a double backwash cam will be as follow:

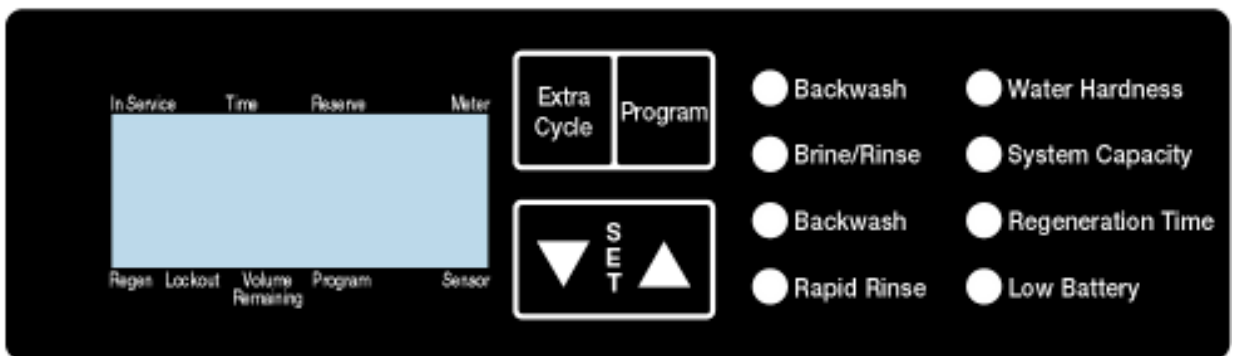
60755-221 Panel Assembly, 5600SE, Front, Black,
Double Backwash, 1st Label, DownFlow, 24 Volt



6700

The 6700 red LED indicator lights will show each cycle step except brine refill. The part number to replace the housing assembly for a double backwash cam will be as follow:

- 19313-116 Housing Assembly, Circuit/Board, 6700 1 Relay, 24 Volt Black, Double Backwash, Brine/Rinse Label
- 19313-216 Housing Assembly, Circuit/Board, 6700 2 Relay, 24 Volt Black, Double Backwash, Brine/Rinse Label



As always, thank you for using Fleck controls.

Sincerely,
Pentair Water Treatment, Inc.

Jay Runkle
Technical/Sales Support