

# A FLECK PERFORMANCE BULLETIN

Product  Application  Service  General news from Fleck Controls

September 25, 1996

## No Hard Water By-Pass Pistons

No hard water by-pass pistons are now available for the 2750, 2850 and 3150 controls. To modify a 2750 or 2850 control in the field, a conversion kit is needed. All conversion kits consist of a spacer (between the valve body and backplate) and longer screws. For 1600 and 1700 brine systems, longer brine tubes and the necessary hardware are included. For existing 3150 controls a piston assembly is all that is necessary. The diagrams illustrate the individual parts that make up these assemblies.

### NHWP-P PISTONS ARE:

<u>VALVE</u>	<u>PART#</u>	<u>DASH # AND DESCRIPTION</u>
2750	60101	-00 Filter Conversion Kit -01 Piston Assembly Only -02 1600 Conversion Kit -03 1700 Conversion Kit
2850	60114	-00 Filter Conversion Kit -01 Piston Assembly Only -02 1600 Conversion Kit -03 1700 Conversion Kit
3150	60113-01	NO CONVERSION KITS NEEDED

To keep part numbers consistent, two part numbers in the Parts Price List have been changed.

The numbers are:

60117 was a 2850/1600 conversion kit, it is now 60114-02

60118 was a 2850/1700 conversion kit, it is now 60114-03

NOTE: The no hard water by-pass piston will NOT take the place of a 3 or 4 way solenoid with diaphragm valve to keep the control in stand-by for (Alternating) System 7.

The no hard water by-pass piston WILL take the place of an SVO with diaphragm valve for Systems 5 and 6.

The 2750 no hard water by-pass piston and conversion kits WILL also work in the 1500, 2500 and 2700 control valves.

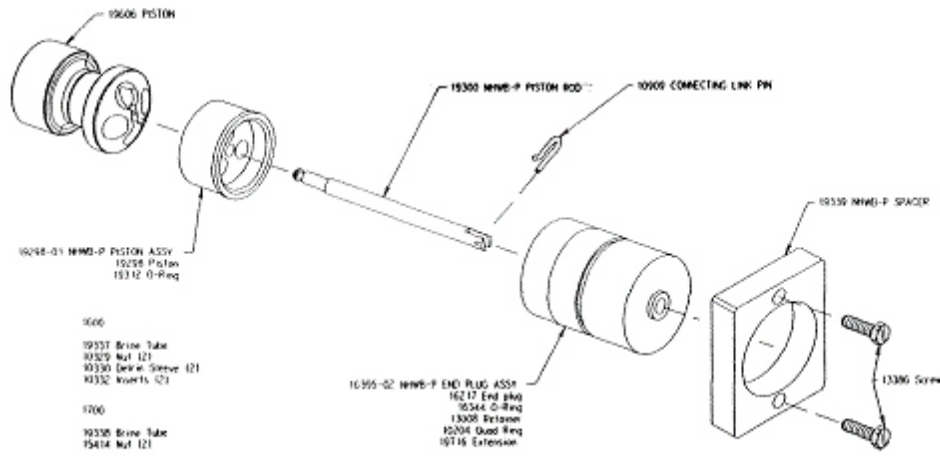
As always, thank you for using Fleck Controls.

Sincerely,  
Fleck Controls, Inc.

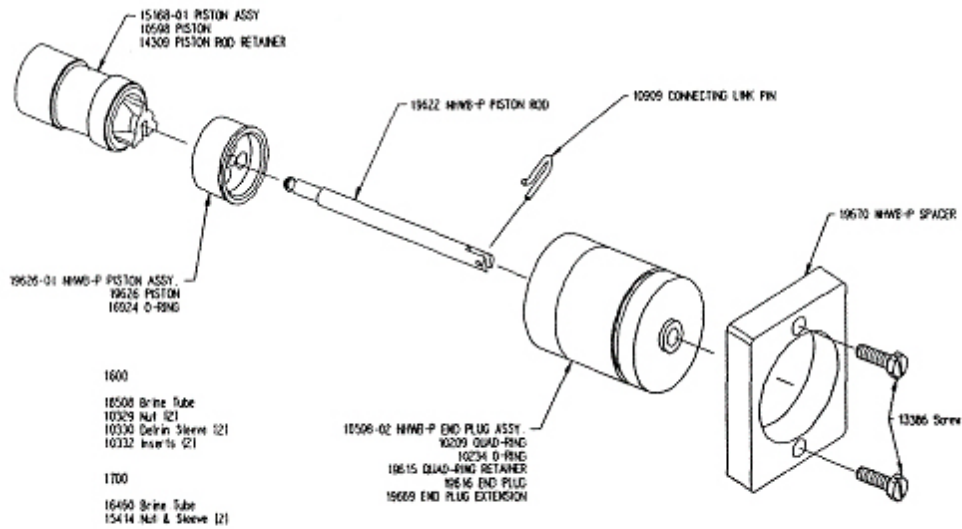


Jay Runkle  
Product Technician

# 2850



# 2750



# 3150

